

KENWOOD

CAR AUDIO / VIDEO



2

0

0

2

You're ready for the next step

DVD. It's the next level in mobile entertainment, and Kenwood's got the goods to take you there.

Our KDV-C810 10-disc DVD/MP3/CD Changer is incredibly versatile: it **plays DVD-Video, DVD-R, CD, CD-R, CD-RW and Video CD discs, plus your MP3-encoded CD-R/RW discs!** The On Screen Display (OSD) features a user-friendly **Graphical User Interface (GUI)** for easy disc control, and via a compatible Kenwood head unit, the OSD provides Disc Name Presets to quickly find a specific CD. Want a closer look at your favorite movie scenes? The KDV-C810 features reverse play, fast forward, and rewind in multiple speeds, and step-by-step frame advance in both forward and reverse. And for great music, its **24-bit digital-to-analog conversion** takes your CDs to a new level. Convenience features include an audio/video output, an independent power supply for use with factory-installed (or other) head units, and a remote control and remote sensor. This killer piece is the foundation for a great mobile entertainment system.

Our mobile video line also features **two high-resolution TV monitors**—the LZ-701W 7" widescreen model and the LZ-601 6.4" model—that can attach to your front dash or be mounted in consoles or headrests for rear-seat passengers. The LZ-701W has a 16 x 9 aspect ratio, which can display both widescreen and regular movies perfectly. Both TV monitors have an input for a DVD player/changer, a VCR—or our KTC-V800N TV Tuner—for watching sports, news, or whatever you choose.

For **convenience**, check out the **SK-701RM mounting bar**—it replaces the grab handle above the back door of most SUVs and mini-vans (on either side) and is designed to hold the Kenwood LZ-701W and LZ-601 TVs in a rear-seat viewing position. (For leased vehicles: the mounting bar can easily be replaced with your original stock equipment when your lease expires.)

Once you've installed the KDV-C810 changer and a TV (or two), hitting the road will never be the same—for you or for your passengers.

KDV-C810

10 Disc DVD/MP3/CD Changer



LZ-701W**7" Widescreen Mobile TV Monitor****LZ-601****6.4" Mobile TV Monitor****SK-701RM****Flexible TV Monitor Mount Kit****KTC-V800N****TV Tuner****KVA-S300****Video Selector/
Distributor****DVD/CD Changer****Features**

	KDV-C810
Disc Player Features	
Disc Capacity	10 Discs
Plays DVD-Video, DVD-R, CD, CD-R, CD-RW, VCD and MP3-Encoded CD-R/RW Discs	•
GUI-Controllable	•
On-Screen Display	MP3 Disc File Structure, CD Track Listing
Kenwood-Designed Anti-Vibration Disc Transport	•
Disc Naming	100 Discs
Disc Name Preset Play	•
Random & Repeat Play	•
Scan	•
Direct Disc & Track Access	with Remote
Audio Features	
Digital-to-Analog Converter	24-Bit Resolution
Digital Filter	24-Bit Resolution, 8-Times Oversampling
Precision Digital Timing (DPAC)	•
Digital Optimum Servo Control	•
Preouts	•
Audio/Video Output	1
Digital Output	•
General Features	
Independent Power Supply	•
3-Angle Mounting (0, 45, 90 Degrees)	•
5-Line Control	•
Included Accessories	
Remote Control	•
Remote Sensor	•
Optional Accessories	
CD Changer Magazine	KCA-M112

Mobile TV Monitor**Features**

	LZ-701W	LZ-601
General Features		
LCD Screen	7" Wide	6.4" Wide
Resolution	336,960 Pixels	224,640 Pixels
Widescreen (16:9) Aspect Ratio	•	
Selectable Screen Viewing Modes	Normal/Full/Zoom/Just/Cinema	
Audio/Video Inputs	1	
Audio/Video Outputs	1	
Video Inputs		1
Auto Format Selection (NTSC/PAL)		•
Brightness Control	Auto	•
Optional Accessories		
KTC-V800N Tuner	•	•
KVA-S300 Video Selector	•	•

TV Tuner Features

	KTC-V800N
General Features	
Audio/Video Inputs	2
Audio/Video Outputs	1
RGB Input	•
Station Presets	16
Seek Tuning	Auto
Automatic Memory Entry	•
Included Accessories	
Window-Mounted 4-Channel Diversity Antenna	•
Remote Control	•

Video Switcher Features

	KVA-S300
General Features	
Audio/Video Inputs	3
Audio/Video Outputs	3
Video Signal Booster	•
Reverse Gear Sensor for Rear-Facing Camera Capability	•
Included Accessories	
Individual Controller Modules with Headphone Outputs and Volume	2

Hot sights and hot sounds

Colorful displays with moving images, motorized faceplates, CD/MP3 play, power, and control—Kenwood receivers have it all.



Our **MegaMotion™ display** provides high-resolution visuals and even moving images: you can watch a **custom-designed** movie of an F1 race car or a yacht race, at the touch of a button. Each of the display's thousands of dots is 4-tone capable, for incredible detail and realism—and the end of boring dashboards.

And it just gets better: our **exclusive, fully motorized D MASK+ self-hiding faceplate** revolves out when the ignition turns off; you can then grab it and go, or let it fully revolve into the dash till it shows only its black back-side to anyone looking in. Other models feature faceplates that flip down for CD or tape loading and are removable for security.

Want to play a variety of media? All of our CD receivers play conventional CDs, CD-Rs, and CD-RWs, and select models also will **play your MP3-encoded CD-R/CD-RWs**. Plus, most CD receivers can control a

Kenwood CD/MD changer. We also offer an MD receiver, and if you're looking for a great cassette receiver, look no further: our line includes models with auto-reverse, full logic controls, and CD/MD changer control.

At Kenwood, we believe that since it's your car, your music should sound the way you want it to. That's why we invented **System Q sound control**, providing **five pre-set EQ curves** (Rock, Top 40, Jazz, etc.) and three speaker-matching EQ curves, for tone-tailoring. And all models feature high power output, ranging from 45 watts to 50 watts per channel x 4, plus pre-outs for adding power amplifiers.

If you're looking for a full-featured, powerful, colorful receiver that can control your entire system, Kenwood's got it.

KDC-MP919 MP3/CD Receiver

music key
ready

D MASK+
AUTOMATIC

SIRIUS
Satellite Radio



KDC-MP819
MP3/CD Receiver

music key ready SIRIUS



KDC-MPV7019
MP3/CD Receiver

music key ready SIRIUS



KDC-719
CD Receiver

music key ready SIRIUS



KDC-MPV619
MP3/CD Receiver

music key ready SIRIUS



KDC-5019
CD Receiver

music key ready D-MASK SIRIUS



KDC-519
CD Receiver

music key ready D-MASK SIRIUS



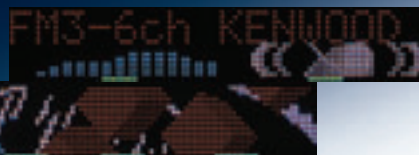
KDC-4019
CD Receiver

music key ready SIRIUS



Fluorescent Hi-Resolution Color Displays

Our Hi-Resolution Color Display practically jumps right off the dash at you with 3-D multi-color graphics and moving images. Fluorescent backlighting lets you see it all, even in daylight, and with the adjustable dimmer you can cool things off after the sun goes down.



Featured on the KDC-MP819 and KDC-719.

KDC-419

music key
ready



CD Receiver



KDC-319

music key
ready



CD Receiver



KDC-2019

music key
ready

CD Receiver



KDC-2019V

music key
ready

CD Receiver



KDC-217

CD Receiver



KDC-119

CD Receiver



KMD-44

music key
ready

MD Receiver



Color Shock™ Variable Color Display

Tired of boring displays? Our exclusive Color Shock variable color display has 67 different backlight colors so you can match your mood, the music you're listening to, or even your hair color! If you can't decide, you can set the display to automatically cycle through all 67 colors, and you can even have it change according to the time of day.

Featured on the KDC-MPV7019 and KDC-MPV619.



DPX-4020

Double-DIN Size CD/Cassette Receiver



KRC-535

Cassette Receiver



KRC-435

Cassette Receiver



KRC-335

Cassette Receiver



KRC-235

Cassette Receiver



KRC-108S

Cassette Receiver



KRC-2007/KRC-1007

Shaft-Mount Cassette Receivers



CD Receiver Features

Features	CD Receiver								
	KDC-MP919	KDC-MP819	KDC-MPV7019	KDC-719	KDC-MPV619	KDC-5019	KDC-519	KDC-4019	KDC-419
Power Output									
Maximum Power	50 Watts x 4	50 Watts x 4	50 Watts x 4	50 Watts x 4	50 Watts x 4	50 Watts x 4	50 Watts x 4	50 Watts x 4	50 Watts x 4
Full-Bandwidth Power	22 Watts x 4	22 Watts x 4	22 Watts x 4	22 Watts x 4	22 Watts x 4	22 Watts x 4	22 Watts x 4	22 Watts x 4	22 Watts x 4
Compact Disc Features									
MP3-Encoded CD-R Playback w/Hi-Speed File Access	•	•	•		•				
CD, CD-R/RW Playback	•	•	•	•	•	•	•	•	•
CD Text	•	•	•	•	•				
0-Bit Mute	Independent L/R	Independent L/R		Independent L/R		•	•		
Integrated Quad 1-Bit D/A converter	•	•	•	•	•	•	•	•	•
8-Times Oversampling Digital Filter	•	•	•	•	•	•	•	•	•
Digital Optimum Servo Control	•	•	•	•	•	•	•	•	•
Precision Digital Timing (DPAC)	•	•	•	•	•	•	•	•	•
Random & Repeat Play	•	•	•	•	•	•	•	•	•
Intro Scan	•	•	•	•	•	•	•	•	•
Changer Control Type (see table on page 16 for details)	3	3	3	3	3	3	3	3	3
Tuner Features									
Sirius Satellite Radio Ready	•	•	•	•	•	•	•	•	•
Kenwood CR-2 Advanced Tuner	•	•	•	•	•	•	•	•	•
High-Speed Multipath Control (CRSC) with ANRC	•	•	•	•	•	•	•	•	•
Station Presets	24 (18 FM, 6 AM)	24 (18 FM, 6 AM)	24 (18 FM, 6 AM)	24 (18 FM, 6 AM)	24 (18 FM, 6 AM)	24 (18 FM, 6 AM)	24 (18 FM, 6 AM)	24 (18 FM, 6 AM)	24 (18 FM, 6 AM)
Automatic Memory Entry	•	•	•	•	•	•	•	•	•
Seek Tuning	•	•	•	•	•	•	•	•	•
DAB Tuner Control	•	•	•	•	•	•	•	•	•
Audio Features									
Preouts	Front/Rear	Front/Rear	Front/Rear	Front/Rear	Front/Rear	Front/Rear	Front/Rear	Front/Rear	Front/Rear
Non-Fading Subwoofer Preout	with Level Adjustment		•					•	
System Q Sound Control	•	•	•	•	•	•	•	•	•
Tone Controls	Bass/Mid/Treble	Bass/Mid/Treble	Bass/Mid/Treble	Bass/Mid/Treble	Bass/Mid/Treble	Bass/Mid/Treble	Bass/Mid/Treble	Bass/Mid/Treble	Bass/Mid/Treble
Factory Preset EQ Curves									
Speaker Matching Equalization Curves	3								
High-Pass Electronic Crossover (40/60/80/100/120/150/180/220 Hz Plus Pass-Through)	•								
Low-Pass Electronic Crossover (50/80/120Hz, plus Pass-Through)	•								
High-Voltage Preamp Output/ Low Output Impedance	4.5V/<80 ohms								
Muting Circuit for Internal Power Amplifier		Switchable		Switchable					
Attenuator with Smooth Volume Return	•	•	•	•	•	•	•	•	•
Electronic Audio Control	•	•	•	•	•	•	•	•	•
Source Tone Memory	•	•	•	•	•	•	•	•	•
Loudness Control	•	•	•	•	•	•	•	•	•
Front-Rear Fader	•	•	•	•	•	•	•	•	•
Rotary Encoder Volume Control	•								
Aux Input		•							
Dual-Zone Audio Control w/Optional Adapter	•								
General Features									
D MASK + Self-Hiding Removable Faceplate with Viewing Angle Adjustment	•					•	•		
Flip-Down Removable Faceplate		•	•		•			•	•
Removable Faceplate									
Programmable Security Code System	•			•		•	•		
LCD Display	Fluorescent, 4-Tone Fine Dot	Fluorescent, High-Resolution Color	ColorShock Variable Color Display	Fluorescent, High-Resolution Color	ColorShock Variable Color Display	Blue, with White LED Backlight	High-Resolution Color, with White LED Backlight	High-Resolution Color, with White LED Backlight	High-Resolution Color, with White LED Backlight
Display Readout	MegaMotion 3D Display	3D Full Dot Matrix	5x7 Dot Matrix, 8-Character	3D Full Dot Matrix	5x7 Dot Matrix, 8-Character	5x7 Dot Matrix, 12-Character	5x7 Dot Matrix, 12-Character	14-Segment	5x7 Dot Matrix, 8-Character
Matches Volkswagen Factory Dashboard Illumination									
Display Contrast & Dimmer Controls	Dimmer	Dimmer	•	•	•	•	•		
Spectrum Analyzer Display									
Sub-Illumination	Blue	Blue	Blue	Blue	Blue	Blue	Blue	Blue	Blue
Illuminated Function Buttons	Green/Red (Selectable)	Green/Red (Selectable)	Green/Red (Selectable)	Green	Green/Red (Selectable)	Green/Red (Selectable)	Green	Green	Green
Memory Calendar									
Touch-Tone Buttons	Defeatable	Defeatable	Defeatable	Defeatable	Defeatable	Defeatable	Defeatable	Defeatable	Defeatable
Finish	Silver/Black	Silver	Silver	Silver	Silver	Silver/Black	Silver/Black	Silver	Silver
Clock	•	•	•	•	•	•	•	•	•
Iso-Mount Capability for Japanese Vehicles	•	•	•	•	•	•	•	•	•
Double-DIN Size In-Dash Mounting									
Included Accessories									
10-Key Remote	•	•	•	•	•	•	•	•	•
Optional Accessories									
KCA-RC600 Full-Function Grip-Type 10-Key Remote	•	•	•	•	•	•	•	•	•
KCA-RC700 Steering Wheel Remote	•	•	•	•	•	•	•	•	•
KPA-HD100 Heads-Up Display	•	•	•	•	•	•	•		•
KPA-SS100 Sensor Unit	•	•	•	•	•	•	•		•
KPA-CP100 Compass	•	•	•	•	•	•	•		•
KTC-WB100 Weather Band Tuner	•	•	•	•	•	•	•	•	•

CD Receiver Features (cont.)

	CD Receiver					Double DIN Size DPX-4020
	KDC-319	KDC-2019V	KDC-2019	KDC-217	KDC-119	
Power Output						
Maximum Power	50 Watts x 4	50 Watts x 4	50 Watts x 4	45 Watts x 4	45 Watts x 4	47 Watts x 4
Full-Bandwidth Power	22 Watts x 4	22 Watts x 4	22 Watts x 4	22 Watts x 4	22 Watts x 4	22 Watts x 4
Compact Disc Features						
MP3-Encoded CD-R Playback w/Hi-Speed File Access						
CD, CD-R/RW Playback	•	•	•	•	•	•
CD Text						•
0-Bit Mute						•
Integrated Quad 1-Bit D/A converter	•	•	•	•	•	•
8-Times Oversampling Digital Filter	•	•	•	•	•	•
Digital Optimum Servo Control	•	•	•	•	•	•
Precision Digital Timing (DPAC)	•	•	•	•	•	•
Random & Repeat Play	•	•	•	•	•	•
Intro Scan	•	•	•	•	•	•
Changer Control Type (see table on page 16 for details)	3	2	2	None	None	3
Tuner Features						
Sirius Satellite Radio Ready	•					
Kenwood CR-2 Advanced Tuner	•	•	•	•	•	CR-1
High-Speed Multipath Control (CRSC) with ANRC	•	•	•	•	•	•
Station Presets	24 (18 FM, 6 AM)	24 (18 FM, 6 AM)	24 (18 FM, 6 AM)	24 (18 FM, 6 AM)	24 (18 FM, 6 AM)	24 (18 FM, 6 AM)
Automatic Memory Entry	•	•	•	•	•	•
Seek Tuning	•	•	•	•	•	•
DAB Tuner Control	•					
Audio Features						
Preouts	Front/Rear	Front/Rear	Front/Rear	Rear	Rear	Front/Rear
Non-Fading Subwoofer Preout						
System Q Sound Control	•	•	•	•	•	
Tone Controls	Bass/Mid/Treble	Bass/Mid/Treble	Bass/Mid/Treble	Bass/Mid/Treble	Bass/Mid/Treble	3-Band Graphic EQ
Factory Preset EQ Curves						9
Speaker Matching Equalization Curves						
High-Pass Electronic Crossover (40/60/80/100/120/150/180/220 Hz Plus Pass-Through)						
Low-Pass Electronic Crossover (50/80/120Hz, plus Pass-Through)						
High-Voltage Preamp Output/ Low Output Impedance						
Muting Circuit for Internal Power Amplifier						
Attenuator with Smooth Volume Return	•	•	•	•	•	•
Electronic Audio Control	•	•	•	•	•	•
Source Tone Memory	•	•	•	•	•	•
Loudness Control	•	•	•	•	•	•
Front-Rear Fader	•	•	•	•	•	•
Rotary Encoder Volume Control						
Aux Input						
Dual-Zone Audio Control w/Optional Adapter						
General Features						
D MASK + Self-Hiding Removable Faceplate with Viewing Angle Adjustment						
Flip-Down Removable Faceplate	•					(Non-Removable)
Removable Faceplate		•	•	•		
Programmable Security Code System						•
LCD Display	High-Resolution Color, with White LED Backlight	Positive, with Blue Backlight	Color, with White LED Backlight	Color, with White LED Backlight	Negative, with White LED Backlight	Fluorescent, 3-Color
Display Readout	14-Segment	7-Segment	7-Segment	7-Segment	7-Segment	5x7 Dot Matrix
Matches Volkswagen Factory Dashboard Illumination		•				
Display Contrast & Dimmer Controls						13-Step Dimmer
Spectrum Analyzer Display						11-Band
Sub-Illumination	Blue	Blue	Blue	Green		Blue
Illuminated Function Buttons	Green	Red	Green	Green	Green	Green
Memory Calendar						
Touch-Tone Buttons	Defeatable	Defeatable	Defeatable	Defeatable	Defeatable	Defeatable
Finish	Silver	Silver	Silver	Silver	Silver	Gray
Clock	•	•	•	•	•	•
Iso-Mount Capability for Japanese Vehicles	•	•	•	•	•	•
Double-DIN Size In-Dash Mounting						•
Included Accessories						
10-Key Remote	•	•	•			Grip-Type
Optional Accessories						
KCA-RC600 Full-Function Grip-Type 10-Key Remote	•	•	•			
KCA-RC700 Steering Wheel Remote	•	•	•			•
KTC-WB100 Weather Band Tuner	•					

MD Receiver Features

	MD Receiver	
	KMD-44	
Power Output		
Maximum Power	45 Watts x 4	
Full-Bandwidth Power	22 Watts x 4	
Mini Disc Features		
Plays Conventional MD and MD-LP Discs	•	
Kenwood Mini Disc Transport Mechanism	•	
Integrated Quad 1-Bit D/A converter	•	
8-Times Oversampling Digital Filter	•	
Digital Optimum Servo Control	•	
Precision Digital Timing (DPAC)	•	
Title Display	•	
Track/Disc Search	•	
Random & Repeat Play	•	
Scan	•	
Changer Control Type (see table on page 16 for details)	3	
Tuner Features		
Sirius Satellite Radio Ready		
Kenwood CR-2 Advanced Tuner	•	
High-Speed Multipath Control (CRSC) with ANRC	•	
Station Presets	24 (18 FM, 6 AM)	
Automatic Memory Entry	•	
Seek Tuning	•	
DAB Tuner Control		
Audio Features		
Preouts	Rear	
Non-Fading Subwoofer Preout		
System Q Sound Control	•	
Tone Controls	Bass/Mid/Treble	
Factory Preset EQ Curves		
Speaker Matching Equalization Curves		
High-Pass Electronic Crossover (40/60/80/100/120/150/180/220 Hz Plus Pass-Through)		
Low-Pass Electronic Crossover (50/80/120Hz, plus Pass-Through)		
High-Voltage Preamp Output/ Low Output Impedance		
Muting Circuit for Internal Power Amplifier		
Attenuator with Smooth Volume Return	•	
Electronic Audio Control	•	
Source Tone Memory	•	
Loudness Control	•	
Front-Rear Fader	•	
Rotary Encoder Volume Control		
Aux Input		
Dual-Zone Audio Control w/Optional Adapter		
General Features		
D MASK + Self-Hiding Removable Faceplate with Viewing Angle Adjustment		
Flip-Down Removable Faceplate	•	
Removable Faceplate		
Programmable Security Code System		
LCD Display	High-Resolution Color, with White LED Backlight	
Display Readout	12-Character Dot Matrix	
Matches Volkswagen Factory Dashboard Illumination		
Display Contrast & Dimmer Controls	Contrast	
Spectrum Analyzer Display		
Sub-Illumination	Blue	
Illuminated Function Buttons	Green	
Memory Calendar	•	
Touch-Tone Buttons	Defeatable	
Finish	Black	
Clock	•	
Iso-Mount Capability for Japanese Vehicles	•	
Double-DIN Size In-Dash Mounting		
Included Accessories		
10-Key Remote		
Optional Accessories		
KCA-RC600 Full-Function Grip-Type 10-Key Remote	•	
KCA-RC700 Steering Wheel Remote	•	
KTC-WB100 Weather Band Tuner	•	

receivers

Cassette Receiver Features

	KRC-535	KRC-435	KRC-335	KRC-235	KRC-108S	KRC-2007	KRC-1007	Double DIN Size DPX-4020
Power Output								
Maximum Power	50 Watts x 4	47 Watts x 4	45 Watts x 4	40 Watts x 4	40 Watts x 4	25 Watts x 2 or 15 Watts x 4	8 Watts x 2 or 6 Watts x 4	47 Watts x 4
Full-Bandwidth Power	22 Watts x 4	22 Watts x 4	22 Watts x 4	20 Watts x 4	20 Watts x 4	15 Watts x 2	5 Watts x 2	22 Watts x 4
Cassette Features								
Auto-Reverse Transport	•	•	•	•	•	•	•	•
Full-Logic Transport Control	•	•	•	•	•	•	•	•
Dolby B Noise Reduction	•	•	•	•	•	•	•	•
Double-Guttered Tape Head	•	•	•	•	•	•	•	•
Metal Tape Selector	•	•	•	•	•	•	•	•
Tape Advance	•	•	•	•	•	•	•	•
Tape Counter	•	•	•	•	•	•	•	•
DPSS: Song Search	•	•	•	•	•	•	•	•
Blank Skip	•	•	•	•	•	•	•	•
Index Scan	•	•	•	•	•	•	•	•
Tuner Call During FF/Rew	•	•	•	•	•	•	•	•
Tuner Features								
Sirius Satellite Radio Ready	•	•	•	•	•	•	•	•
Kenwood CR-2 Advanced Tuner	•	•	•	•	•	•	•	CR-1
High-Speed Multipath Control (CRSC) with ANRC	•	•	•	•	•	•	•	•
Station Presets	24 (18 FM, 6 AM)	24 (18 FM, 6 AM)	24 (18 FM, 6 AM)	24 (18 FM, 6 AM)	24 (18 FM, 6 AM)	30 (18 FM, 12 AM)	30 (18 FM, 12 AM)	24 (18 FM, 6 AM)
Automatic Memory Entry	•	•	•	•	•	•	•	•
Seek Tuning	•	•	•	•	•	•	•	•
DAB Tuner Control	•	•	•	•	•	•	•	•
Audio Features								
Preouts	Front/Rear	Front/Rear	Front/Rear	Rear	•	Rear	•	Front/Rear
Selectable Rear/Non-Fading Preout	•	•	•	•	•	•	•	•
System Q Sound Control	•	•	•	•	•	•	•	•
EC4 Equalization	•	•	•	•	•	•	•	•
Tone Controls	Bass/Mid/Treble	Bass/Mid/Treble	Bass/Mid/Treble	Bass/Treble	Bass/Treble	Bass/Treble	Treble Cut	•
Graphic Equalizer with 9 Preset EQ Curves	•	•	•	•	•	•	•	3-Band
Audio DSP Modes	•	•	•	•	•	•	•	6
Attenuator with Smooth Volume Return	•	•	•	•	•	•	•	•
Electronic Audio Control	•	•	•	•	•	•	•	•
Source Tone Memory	•	•	•	•	•	•	•	•
Loudness Control	•	•	•	•	•	•	•	•
Front-Rear Fader	•	•	•	•	•	•	Power Fader	•
General Features								
D MASK + Self-Hiding Removable Faceplate with Viewing Angle Adjustment	•	•	•	•	•	•	•	•
Flip-Down Removable Faceplate	•	•	•	•	•	•	•	(Non-Removable)
Removable Faceplate	•	•	•	•	Fixed	Shaft-Mount	Shaft-Mount	•
Programmable Security Code System	•	•	•	•	•	Positive (Green)	Positive	Fluorescent, 3-Color
LCD Display	High-Resolution Color, with White LED Backlight	High-Resolution Color, with White LED Backlight	Color, with White LED Backlight	Color	Positive	Positive (Green)	Positive	5 x 7 Dot Matrix
Display Readout	5 x 7 Dot Matrix	14-Segment	7-Segment	7-Segment	7-Segment	4-Segment	4-Segment	13-Step Dimmer
Display Contrast & Dimmer Controls	•	•	•	•	•	•	•	11-Band (13-Step)
Spectrum Analyzer Display	•	•	•	•	•	•	•	Blue Status Indicator
Sub-Illumination	Blue	Blue	Blue	Green	•	•	•	Green
Illuminated Function Buttons	Green/Red (Selectable)	Green	Green	Green	•	•	•	•
Memory Calendar	•	•	•	•	•	•	•	•
Touch-Tone Buttons	Defeatable	Defeatable	Defeatable	Defeatable	Defeatable	•	•	Defeatable
Finish	Silver/Black	Silver	Silver	Silver	Silver	Black	Black	Gray
Clock	•	•	•	•	•	•	•	•
Iso-Mount Capability for Japanese Vehicles	•	•	•	•	•	•	•	•
Double-DIN Size In-Dash Mounting	•	•	•	•	•	•	•	•
Changer Control Type	3	3	3	2	•	•	•	3
Included Accessories								
Remote	10-Key	10-Key	•	•	•	•	•	Grip-Type
Optional Accessories								
KCA-RC600 Full-Function Grip-Type 10-Key Remote	•	•	•	•	•	•	•	•
KCA-RC700 Steering Wheel Remote	•	•	•	•	•	•	•	•
KPA-HD100 Heads-Up Display	•	•	•	•	•	•	•	•
KPA-SS100 Sensor Unit	•	•	•	•	•	•	•	•
KPA-CP100 Compass	•	•	•	•	•	•	•	•
KTC-WB100 Weather Band Tuner	•	•	•	•	•	•	•	•

Radio on your terms

Your favorite bands and talk personalities, beamed straight to your car from satellites in space? Yes—but only if you're ready to get Sirius®.

Sirius Satellite Radio, that is. Sirius programming includes **60 commercial-free, original-music channels and 40 news, sports, and information channels**, so whether you're into rock, hip-hop, country, classical, alternative, electronica, talk, sports, news, or all of the above, it's all yours to choose from, 24/7.

Sirius Satellite Radio offers the kind of depth you just can't get on FM or AM. Examples? If you liked the hit played on channel 14, the DJ may say that deeper cuts are available on channel 16 at 6:30 tonight. Or, that there's an artist's retrospective on channel 34, or that you can hear his early work on the 80's channel. Try finding *that* on ordinary radio.

A monthly Sirius subscription buys you all 100 channels, whenever you want them. And because Sirius signals come from three high-altitude satellites in multiple locations, they lock onto your car and don't let go. You can **drive across the U.S. and the signals will follow you from coast to coast**, with digital sound quality all the way.



Besides a Kenwood head unit that's Sirius Satellite Radio ready, you'll need our Sirius Satellite Tuner and a Sirius Antenna. Once you're set with the hardware, get Sirius—and get ready for a totally new radio experience.

KTC-SR901

Sirius Satellite Radio Tuner



CX-SR10

Sirius Satellite Radio Antenna



Sirius Satellite Radio Tuner Features

	KTC-SR901
Tuner Features	
Compatible with Most 2002 Kenwood CD and Cassette Receivers and In-Dash Televisions	•
Compatible with Many 2001 Kenwood CD and Cassette Receivers	•
Connects via 5-Line Changer Terminal	•
Requires Optional CX-SR10 Antenna (or equivalent)	•
Sirius System Features	
3 High-Altitude Geo-Synchronous Orbiting Satellites Minimize Service Interruptions and Multipath Interference	•
Coast-to-Coast Coverage (check www.sirius.com for updates)	•
Subscription Service Features	
60 Commercial-Free Music Stations	•
40 News, Sports and Information Stations	•
Optional Accessories	
CX-SR10 Antenna	•



Brute power. Precise flexibility.

Kenwood amplifiers offer a combination of intelligent design, heavy-duty construction—and enough power to make your eyes water. Our amplifier line offers a variety of power ratings, **up to a blistering 1,000 watts**. And they're available in several different channel configurations, so you'll have plenty of options to fit your system and vehicle.

Kenwood amplifiers are built to be rugged and reliable, with construction features like power **MOSFET switching power supplies, copper-shielded EE core transformers, multiple secondary capacitors, and toroidal noise suppression filters**. The benefits of this brick-house construction? Your music is kept pure and the amp can handle the pounding, both from your music and from the road.

In a quality amplifier, power isn't everything. We also build in the tools that let you get the music just right. Kenwood amps feature **built-in electronic cross-overs**—either high-pass, low-pass, or both—that let you send your speakers and subs the signals they can most effectively reproduce. And some of our amps include a **Bass Boost** feature which allows you to increase the bass signal 6dB (or up to 12dB on some models), an extremely noticeable boost to you or anyone nearby.

Powerful, well-constructed, and versatile: that's what Kenwood amplifiers are about, and they will take your system to the next level. Put one (or more) in your car, and you'll see what we mean.

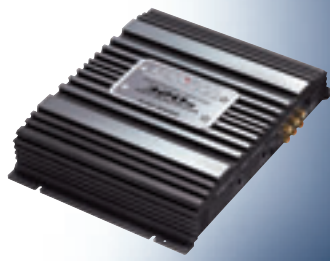
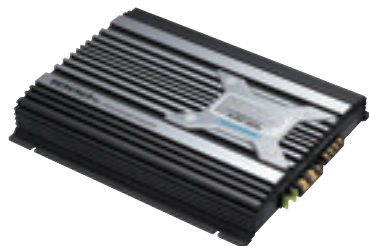
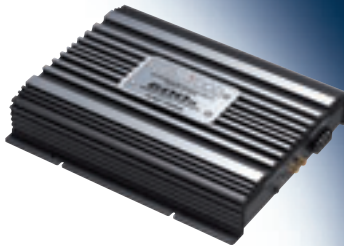
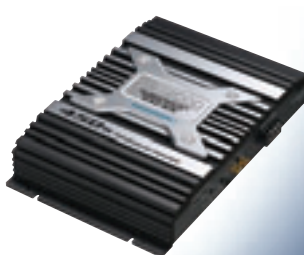


KAC-959

5-Channel
Power Amplifier

MAX
POWER **800W**



KAC-849MAX
POWER **600W****4-Channel
Power Amplifier****KAC-749S**MAX
POWER **450W****4-Channel
Power Amplifier****KAC-649S**MAX
POWER **320W****4-Channel
Power Amplifier****KAC-929**MAX
POWER **1000W****2-Channel
Power Amplifier****KAC-829**MAX
POWER **600W****2-Channel
Power Amplifier****KAC-729S**MAX
POWER **600W****2-Channel
Power Amplifier****KAC-629S**MAX
POWER **350W****2-Channel
Power Amplifier****KAC-529S**MAX
POWER **250W****2-Channel
Power Amplifier****KAC-819**MAX
POWER **450W****Mono Power Amplifier**

Multi-Channel and Mono Amplifier Features

	Multi-Channel				Mono
	KAC-959	KAC-849	KAC-749S	KAC-649S	KAC-819
Power Output					
4 Ohm @ 14.4V	40 Watts x 4 (20Hz - 20kHz, 0.08% THD) + 120 Watts x 1 (100Hz, 0.08% THD)	50 Watts x 4 (20Hz-20kHz, 0.08% THD)	40 Watts x 4 (20Hz-20kHz, 0.08% THD)	30 Watts x 4 (20Hz-20kHz, 0.08% THD)	150 Watts x 1 (20Hz-200Hz, 0.08% THD)
2 Ohm @ 14.4V	60 Watts x 4 (1kHz, 0.8% THD) + 150 Watts x 1 (100Hz, 0.8%)	75 Watts x 4 (1kHz, 0.8% THD)	60 Watts x 4 (1kHz, 0.8% THD)	40 Watts x 4 (1kHz, 0.8% THD)	230 Watts x 1 (100Hz, 0.8% THD)
Bridged @ 14.4V	120 Watts x 2 (1kHz, 0.8% THD) + 150 Watts x 1 (100Hz)	120 Watts x 2 (1kHz, 0.8% THD)	120 Watts x 2 (1kHz, 0.8% THD)	80 Watts x 2 (1kHz, 0.8% THD)	
Maximum Output Power	800 Watts	600 Watts	450 Watts	320 Watts	450 Watts
Audio Features					
Channels of Operation	5, 4 or 3	4, 3 or 2	4, 3 or 2	4, 3 or 2	1
Operation Modes	Stereo, L+R, Mono, Tri-Mode	Stereo, L+R, Mono, Tri-Mode	Stereo, L+R, Mono, Tri-Mode	Stereo, L+R, Mono, Tri-Mode	Mono
Sigma Servo					•
Input Selector	A/AB/A—Sub/AB—Sub, with Independent Gain Adjustment	A/AB, with Independent Gain Adjustment	A/AB, with Independent Gain Adjustment	A/AB, with Independent Gain Adjustment	
Low-Pass Electronic Crossover	50Hz-200Hz (variable), 18dB/oct (sub channel)	50Hz-200Hz (variable), 12dB/oct, A and B channels	50Hz-200Hz (variable), 12dB/oct, A and B channels	80Hz, 12dB/oct, A and B channels	50Hz-200Hz, 18dB/oct
High-Pass Electronic Crossover	Off/80Hz/150Hz (selectable), 12dB/oct (A/B channels)	50Hz-200Hz (variable), 12dB/oct, A and B channels	50Hz-200Hz (variable), 12dB/oct, A and B channels	150Hz, 12dB/oct, A and B channels	
Infrasonic Filter					Off/15Hz/25Hz, 18dB/oct
Bass Boost		Off/+6dB at 90Hz, B channels	Off/+6dB at 90Hz, B channels		
Ground Isolation Circuit	•	•	•	•	•
RCA Audio Inputs	Gold-Plated	Gold-Plated	Gold-Plated	Gold-Plated	Gold-Plated
RCA Subwoofer Input	Selectable				
Line Outputs	Gold-Plated	Gold-Plated	Gold-Plated	Gold-Plated	
Speaker Connectors	Gold-Plated, Screw-Type	Gold-Plated, Screw-Type	Gold-Plated, Screw-Type	Gold-Plated, Screw-Type	Gold-Plated, Screw-Type
Speaker Level Input Terminals	Gold-Plated, Screw-Type	•	•	•	Screw-Type
Speaker Relay Protection	•	•	•	•	•
Quiet Turn-On	•	•	•	•	•
Power Supply Features					
Power MOSFET Switching Power Supply	•	•	•	•	•
Copper EE Core Power Transformer	2	•	•	•	•
Secondary Capacitors	4	2 Large	2	2	2
Toroidal Noise Suppression Filter	2 Large	Large	Large	•	•
Black Power-Coated Top Cover	with Sandblast Finish	with Sandblast Finish	with Sandblast Finish	with Sandblast Finish	with Sandblast Finish
Power Input Terminals	Gold-Plated, Large Screw-Type	Gold-Plated, Large Screw-Type	Gold-Plated, Large Screw-Type	Gold-Plated, Large Screw-Type	Gold-Plated, Large Screw-Type
Large Aluminum ID Badge	•	•			•
Power Indicator	Blue	Blue	•	•	Blue
2-Ohm Stable	•	•	•	•	•

2-Channel Amplifier

Features	KAC-929	KAC-829	KAC-729S	KAC-629S	KAC-529S
Power Output					
4 Ohm @ 14.4V	150 Watts x 2 (20Hz-20kHz, 0.08% THD)	100 Watts x 2 (20Hz-20kHz, 0.08% THD)	100 Watts x 2 (20Hz-20kHz, 0.08% THD)	60 Watts x 2 (20Hz-20kHz, 0.08% THD)	40 Watts x 2 (20Hz-200Hz, 0.08% THD)
2 Ohm @ 14.4V	230 Watts x 2 (1kHz, 0.8% THD)	150 Watts x 2 (1kHz, 0.8% THD)	150 Watts x 2 (1kHz, 0.8% THD)	75 Watts x 2 (1kHz, 0.8% THD)	60 Watts x 2 (1kHz, 0.8% THD)
Bridged @ 14.4V	460 Watts x 2 (1kHz, 0.8% THD)	300 Watts x 1 (1kHz, 0.8% THD)	300 Watts x 1 (1kHz, 0.8% THD)	150 Watts x 1 (1kHz, 0.8% THD)	120 Watts x 1 (1kHz, 0.8% THD)
Maximum Output Power	1000 Watts	600 Watts	600 Watts	350 Watts	250 Watts
Audio Features					
Channels of Operation	2 or 1	2 or 1	2 or 1	2 or 1	2 or 1
Operation Modes	Stereo, Mono, Tri-Mode	Stereo, Mono, Tri-Mode	Stereo, Mono, Tri-Mode	Stereo, Mono, Tri-Mode	Stereo, Mono, Tri-Mode
Low-Pass Electronic Crossover	50Hz - 200Hz (variable), 18dB/oct	Off/80Hz, 18dB/oct (selectable)	Off/80Hz, 18dB/oct (selectable)	Off/80Hz, 18dB/oct (selectable)	Off/80Hz, 18dB/oct (selectable)
High-Pass Electronic Crossover				150Hz, 18dB/oct	
Bass Boost	Off/+6dB/+12dB at 90Hz				
Dynamic Expander Circuit	Defeatable				
Ground Isolation Circuit	•	•	•	•	•
RCA Audio Inputs	Gold-Plated	Gold-Plated	Gold-Plated	Gold-Plated	Gold-Plated
Speaker Connectors	Gold-Plated, Screw-Type	Gold-Plated, Screw-Type	Gold-Plated, Screw-Type	Gold-Plated, Screw-Type	Screw-Type
Speaker Level Input Terminals	•	Screw-Type	Screw-Type	Screw-Type	Screw-Type
Speaker Relay Protection	•	•	•	•	•
Quiet Turn-On	•	•	•	•	•
Power Supply Features					
Power MOSFET Switching Power Supply	•	•	•	•	•
Copper EE Core Power Transformer	•	•	•	•	•
Secondary Capacitors	2 Large	2 Large	2 Large	2	2
Toroidal Noise Suppression Filter	3	Large	Large	•	•
Black Power-Coated Top Cover	with Sandblast Finish	with Sandblast Finish	with Sandblast Finish	with Sandblast Finish	with Sandblast Finish
Power Input Terminals	Gold-Plated, Large Screw-Type	Gold-Plated, Screw-Type	Gold-Plated, Screw-Type	Gold-Plated, Screw-Type	Screw-Type
Large Aluminum ID Badge	•	•			
Power Indicator	Blue	Blue	•	•	•

Great music x 6. Or 10.

Want to take hours of your favorite CDs with you? Load 'em into a Kenwood CD changer: we offer 10 and 6-disc models, a CD/MP3 model, and even three models that work with your existing factory-installed radio.

All of our changers play conventional **CDs, plus the CD-Rs and CD-RWs that you've recorded at home. And, our KDC-CMP59FM also plays your MP3-encoded CD-R/RWs.**

What if you want to keep your factory-installed in-dash radio, but still get the benefit of a CD Changer? We've got **three full-featured changers that work with most FM tuners.** These models plug right into your current radio; you select an FM frequency through which to play CD audio, and that's it. They come with a thin, dash-mounted LCD display so you can see the disc number and track number, and two models include a remote control.

All of our changers have an Integrated Quad 1-Bit Digital-to-Analog Converter and an 8-times oversampling digital filter, for super-accurate musical reproduction. Plus, they're rugged & virtually skip-proof: a Kenwood-designed anti-vibration disc transport keeps the music flowing even when the road gets rough. And for mounting flexibility, they can be mounted at three different angles in your vehicle.

Want to pump up your system? Add a Kenwood CD Changer, and take your CDs with you.

KDC-CMP59FM

10 Disc MP3/CD Changer/Controller Package



KDC-C517FM

10 Disc CD Changer/Controller Package



KDC-C467FM

6 Disc CD Changer/Controller Package



KDC-C717

10 Disc CD Changer



KDC-C667

6 Disc CD Changer



KMD-D400**In-Dash MD Changer****KDC-D301****In-Dash CD Player****Changer Features**

	KDC-C717	KDC-C667	KDC-CMP59FM	KDC-C517FM	KDC-C467FM
Compact Disc Features					
Disc Capacity	10 Discs	6 Discs	10 Discs	10 Discs	6 Discs
Plays MP3-Encoded CD-R/RW Discs	•	•	•	•	•
Plays CD-R/CD-RW Discs	•	•	•	•	•
Integrated Quad 1-Bit D/A Converter	•	•	•	•	•
8-Times Oversampling Digital Filter	•	•	•	•	•
Digital Optimum Servo Control	•	•	•	•	•
Precision Digital Timing (DPAC)	•	•	•	•	•
Kenwood-Designed Anti-Vibration Disc Transport	•	•	•	•	•
CD Text	•	•	•	•	•
Disc Naming	100 Discs	100 Discs	•	•	•
Controller Features					
Thin Dash-Mount Display/Controller	•	•	•	•	•
Flush-Mount Trim Panel for Dashboard Mounting	•	•	•	•	•
Connects to Most Car Audio Systems Through FM Tuner	•	•	•	•	•
4-Step Modulation Level (Gain) Setting	•	•	•	•	•
Dynamic Control (Automatic Level and Separation Control)	•	•	•	•	•
12 Modulation Frequencies in 200kHz Steps (87.7 – 89.9MHz)	•	•	•	•	•
PLL Frequency-Locked Transmission System	•	•	•	•	•
Full-Function 10-Key Grip-Type Remote	•	•	•	•	•
General Features					
Compatible with All Kenwood Units with Changer Control	•	•	•	•	•
3-Angle Mounting	•	•	•	•	•
Super Capacitor Memory	•	•	•	•	•
5-Line Control	•	•	•	•	•

Changer Control Features

	Type 3	Type 2
Changer Control Features		
Changer Control Capability	2, 1+ Aux (w/KCA-S210 or Compatible Changer)	2, 1+ Aux (w/KCA-S210 or Compatible Changer)
CD Text Display	•	•
Disc Naming	•	•
Disc Name Preset Play	•	•
Play Time Display	•	•
Random Play	Disc, Magazine	Disc, Magazine
Repeat Play	Track, Disc	Track, Disc
Scan	Track, Disc	Track, Disc

CD/MD Player Features

	KMD-D400	KDC-D301
Disc Player Features		
Digital Anti-Skip	10-Seconds	•
Plays MD Discs	•	•
Plays CD, CD-R and CD-RW Discs	•	•
Integrated Quad 1-Bit D/A Converter	24-Bit Resolution	•
8-Times Oversampling Digital Filter	24-Bit Resolution	•
Digital Optimum Servo Control	•	•
Precision Digital Timing (DPAC)	•	•
Kenwood-Designed Transport	•	•
Disc Naming	•	40 Discs
General Features		
Disc Capacity	3 (Changer) + 1 (Player)	1
Compatible with All Kenwood Units with Changer Control	•	•
DIN-Size In-Dash Mounting	•	•
For Use in Double-DIN Dashboard Opening with Cassette	•	•
Flip-Down Removable Faceplate with Carrying Case	•	•
LCD Display	Multi-Color, with White LED	Multi-Color, with White LED
Display Dimmer & Contrast Controls	•	•
11-Band Spectrum Analyzer Display	•	•
Speaker Level Inputs for Spectrum Analyzer	•	•
Disabled System Indicator	•	•
Iso-Mount Capability for Japanese Vehicles	•	•
Title Data Output for use with Compatible Head Units	•	•
Eject/Store Button with 2-Color Disc Status Indicator	•	•
Included Accessories		
2-Foot Changer Control Cable	•	•

Your music, exactly how you want it

Some people are really serious about getting the music exactly right in their vehicle. Sound like you? You've come to the right place: Kenwood's got equalizers and electronic crossovers in four different configurations.

Our KGC-9044 is a DIN-size, in-dash electronic 11-band equalizer with a **flip-down removable faceplate**; it's got factory EQ presets and also lets you program your own. **Built-in high-pass and low-pass electronic crossovers** let you send your speakers and subs the exact signals they can most effectively reproduce. And it's got a **high-voltage preamp output**, plus front, rear, and non-fading RCA pre-outs (gold-plated).

The KEC-600 hideaway electronic crossover is extraordinarily flexible: it can be set for **6-way, multi-amp configuration** and has a **built-in parametric equalizer** and variable level controls for every output. Don't need quite that much flexibility? We offer 3-way and 2-way electronic crossovers as well.

We even have EQs in 1/2-DIN (9- or 11-band) and 1/4-DIN (5-band) sizes, for small and super-small configurations, so you can tailor your music and not give up much space. For even more flexibility, one of our 1/2-DIN EQs doubles as an amplifier, with 40 watts total output power.

OK, so you are picky about how your music sounds. So are we. When you want to get it just right, step up to Kenwood EQs and crossovers.



KGC-9044

11-Band Equalizer



KGC-6042A

9-Band or 11-Band Equalizer



KGC-4042A

5-Band Equalizer



eqs and crossovers

KGC-4032**9-Band Equalizer/Amplifier****KEC-202****2/3-Way Electronic Crossover****KEC-600****6-Way Electronic Crossover****KEC-101****2-Way Electronic Crossover****Equalizer Features**

	KGC-9044	KGC-6042A	KGC-4042A	KGC-4032
Equalizer Features				
Adjustment Bands	11	9 or 11	5	9
Parametric Adjustment Bands		2: (30- 800Hz, 800Hz -16kHz)		
EQ Adjustment Range	±12dB	±12dB	±12dB (50Hz, 200Hz), ±18dB (800Hz, 3.2kHz, 12.8kHz)	±12dB
High-Pass Electronic Crossover	40/ 60/80/100/120/150/180/ 220Hz, plus Pass-Through	100Hz (when Subwoofer is Selected)	100Hz (when Subwoofer is Selected)	
Low-Pass Electronic Crossover	50/80/120Hz, plus Pass-Through	•	•	
Preouts	Front, Rear, Non-Fading (Gold-Plated)	Front, Rear, Subwoofer	Front, Rear, Subwoofer	Front, Rear
High-Voltage Preamp Input/Output	4V			
Factory Preset EQ Curves	6			
Programmable Preset EQ Curves	3			
Switchable 2- or 4-Channel Operation		•		
Front-Rear Fader	•	•	•	•
Ground Isolation Circuit	•	•	•	•
Total Output Power				40 Watts
Booster Capability				•
Speaker Outputs				Front, Rear
LCD Display	Multi-Color, with White LED Backlight			
Spectrum Analyzer Display	11-Band			
Display Contrast & Dimmer Adjustments	•			
Illuminated Function Buttons		Green/Amber (Selectable)	Green/Amber (Selectable)	
Disabled System Indicator	•			
Touch-Tone Buttons	•			
1/2 DIN-Size Super-Slim Chassis		•		•
Iso-Mount Capability for Japanese Vehicles	•	•	•	

Crossover Features

	KEC-600	KEC-202	KEC-101
Crossover Features			
Configuration	Up to 6-Way	2-Way or 3-Way	2-Way
Subwoofer Output (Low-Pass)	30-800Hz (12dB or 18dB/oct, selectable)	30-800Hz, Non-Fading	50Hz/90Hz/4kHz/9kHz, Selectable
Midbass Output (Band-Pass)	30-120Hz (Hi-Pass), 120-800Hz (Lo-Pass)		
Midrange Output (Band-Pass)	30-800Hz (Hi-Pass), 800Hz-10kHz (Lo-Pass) Front & Rear	30-800Hz (Hi-Pass), 3kHz-10kHz or Through (Lo-Pass) Front & Rear	
High Frequency Output (High-Pass)	800Hz-10kHz, Front & Rear	3kHz-10kHz, Front & Rear	50Hz/90Hz/4kHz/9kHz, Selectable
Crossover Filter Slopes	12dB/oct (except Subwoofer output)	12dB/oct	12dB/oct
Built-In Parametric Equalizer	30-300Hz, Selectable Between Subwoofer and Midbass Outputs		
Input Selector	For Subwoofer and Midbass		
Phase Switches	Individual for Subwoofer, Midbass, Front & Rear High-Frequency		
Variable Level Controls	Individual for all Outputs	Stereo for all Outputs	Stereo for all Outputs
RCA Inputs	Front, Rear, Aux (Gold-Plated)	Stereo	Stereo
RCA Outputs	Front Hi & Mid, Rear Hi & Mid, Midbass, Subwoofer (Gold-Plated)	Front Hi & Mid, Rear Hi & Mid, Subwoofer (Non-Fading)	Hi Left & Right, Lo Left & Right
Fader Control		For Mid and High Frequencies	
Stereo/Mono Low Frequency Output Switch		For Subwoofer Output	
Low-Cut Switch			Off/80Hz/120Hz
DC/DC Converter Power Supply	•		
Plexiglas Cover	•		

Great speakers. They're why car audio rocks.

There are a lot of cars and trucks on the road, and they all have one thing in common: they need good sound. Fortunately, Kenwood's got a **huge selection** of speakers, with sizes and power handling to fit just about every possible need.

The design and construction of Kenwood speakers is second to none. We use technologies such as **Pearl Mica Injection-Molded Polypropylene Cones** for optimal musical reproduction. **PEI-Film and PPTA-Film Balanced Dome Tweeters** for smooth highs. Our bumped, concave dust caps improve midrange performance. And our **butyl rubber surrounds** improve a speaker's sound quality and durability. The result of all this attention to detail? High-performance audio that fills your vehicle with cleaner, more well-defined music.

Our **component speaker packages**—including a new **6" x 8" size**—are great examples of Kenwood's car speaker artistry. They feature **real crossover networks in separate, see-through housings**, our **K-Glow™ Tweeter Protection Circuit** that protects the tweeter from excessive power, and deliver a great musical performance every time you fire them up.

Kenwood also offers boxed speakers built specifically for trucks and hatchbacks, with power handling up to 300 watts. These speakers are rugged, musical, and they're ready to rock.

So whether you've got an SUV, car, truck, or hatchback, Kenwood's got the speakers that will fit perfectly—and take your music to the next level.

Component Speaker Packages



KFC-P703
7" Component
Speaker Package

Component Speaker Package Features

	KFC-P703	KFC-P603	KFC-P503	KFC-P403	KFC-P683C
Midrange Features					
Midrange	7" Pearl Mica Polypropylene Cone	6½" Pearl Mica Polypropylene Cone	5¼" Pearl Mica Polypropylene Cone	4" Pearl Mica Polypropylene Cone	6" x 8" Pearl Mica Polypropylene Cone
Butyl Rubber Surround	•	•	•	•	•
Bumped Concave Dustcap	•	•	•	•	•
Magnet Weight	11.6 oz	11.6 oz	8.1 oz	8.1 oz	10.1 oz
Tweeter Features					
Tweeter	1" PEI Film Balanced Dome	1" PEI Film Balanced Dome	1" PEI Film Balanced Dome	1" PEI Film Balanced Dome	¾" PEI Film Balanced Dome
Swivel Tweeter Mount	5-Way	5-Way	5-Way	5-Way	5-Way
System Features					
2-Way Component Passive Crossover in See-Through Enclosure	•	•	•	•	•
K-Glow Tweeter Protection Circuit	•	•	•	•	•
Power Handling	170 Watts	170 Watts	170 Watts	170 Watts	170 Watts
Sensitivity	91dB	91dB	91dB	91dB	91dB
Impedance	4 ohms	4 ohms	4 ohms	4 ohms	4 ohms
Frequency Response	30Hz-32kHz	35Hz-32kHz	40Hz-32kHz	50Hz-32kHz	30Hz-32kHz

Speakers

7" Round Speakers



KFC-1787
7" 3-Way Speaker

7" Round Speaker Features

	KFC-1787	KFC-1777	KFC-1738C
Speaker Features			
Woofer	7" Strato-Blue Pearl Mica Polypropylene Cone	7" Strato-Blue Pearl Mica Polypropylene Cone	7" Strato-Blue Pearl Mica Polypropylene Cone
Midrange	1 3/16" PEI Film Balanced Dome		1 3/16" PEI Film Balanced Dome
Tweeter	1/2" PPS Balanced Dome	1 3/16" PEI Film Balanced Dome	1/2" PPS Film Dome
Woofer Surround	Rubber	Rubber	Cloth
Gold-Plated Speaker Connectors	•	•	
Magnet Weight	10.1 oz	8.1 oz	8.1 oz
Sensitivity	92dB	92dB	92dB
Power Handling	220 Watts	160 Watts	160 Watts
Impedance	4 ohms	4 ohms	4 ohms
Frequency Response	28Hz - 30kHz	33Hz - 25kHz	30Hz - 30kHz

6 1/2" Round Speakers



KFC-1687
6 1/2" 3-Way Speaker

6 1/2" Round Speaker Features

	KFC-1687	KFC-1677	KFC-1668S	KFC-1658S
Speaker Features				
Woofer	6 1/2" Strato-Blue Pearl Mica Polypropylene Cone	6 1/2" Strato-Blue Pearl Mica Polypropylene Cone	6 1/2" Strato-Blue Pearl Mica Polypropylene Cone	6 1/2" Strato-Blue Pearl Mica Polypropylene Cone
Midrange	1 3/16" PEI Film Balanced Dome			
Tweeter	1/2" PPS Balanced Dome	1 3/16" PEI Film Balanced Dome	1 3/8" PEI Film Balanced Dome	PEI Film Wizzer Cone
Woofer Surround	Rubber	Urethane	Cloth	Cloth
Gold-Plated Speaker Connectors	•	•		
Magnet Weight	8.1 oz	8.1 oz	6.3 oz	5.3 oz
Sensitivity	92dB	92dB	92dB	92dB
Power Handling	200 Watts	160 Watts	140 Watts	140 Watts
Impedance	4 ohms	4 ohms	4 ohms	4 ohms
Frequency Response	30Hz - 30kHz	35Hz - 25kHz	35Hz - 22kHz	35Hz - 20kHz

5 1/4" Round Speakers



KFC-1387
5 1/4" 3-Way Speaker

5 1/4" Round Speaker Features

	KFC-1387	KFC-1377	KFC-1368S	KFC-1358S
Speaker Features				
Woofer	5 1/4" Strato-Blue Pearl Mica Polypropylene Cone	5 1/4" Strato-Blue Pearl Mica Polypropylene Cone	5 1/4" Strato-Blue Pearl Mica Polypropylene Cone	5 1/4" Strato-Blue Pearl Mica Polypropylene Cone
Midrange	1" PEI Film Balanced Dome			
Tweeter	3/8" PPS Film Balanced Dome	1" PEI Film Balanced Dome	1 3/8" PEI Film Balanced Dome	PEI Film Wizzer Cone
Woofer Surround	Rubber	Rubber	Cloth	Cloth
Gold-Plated Speaker Connectors	•	•		
Magnet Weight	6.5 oz	5.6 oz	4.4 oz	3.5 oz
Sensitivity	91dB	91dB	91dB	91dB
Power Handling	140 Watts	120 Watts	110 Watts	110 Watts
Impedance	4 ohms	4 ohms	4 ohms	4 ohms
Frequency Response	40Hz - 30kHz	40Hz - 26kHz	40Hz - 22kHz	40Hz - 20kHz

4" and 3 1/2" Round Speakers



KFC-1077
4" 2-Way Speaker

4" and 3 1/2" Round Speaker Features

	KFC-1077	KFC-1068S	KFC-1058S	KFC-835C
Speaker Features				
Woofer	4" Strato-Blue Pearl Mica Polypropylene Cone	4" Strato-Blue Pearl Mica Polypropylene Cone	4" Strato-Blue Pearl Mica Polypropylene Cone	3 1/2" Water-Resistant Cone
Tweeter	1" PEI Film Balanced Dome	1 3/16" PEI Film Balanced Dome	PEI Film Wizzer Cone	Wizzer Cone
Woofer Surround	Rubber	Cloth	Cloth	Cloth
Gold-Plated Speaker Connectors	•	•		
Magnet Weight	4.6 oz	4.4 oz	3.5 oz	5.6 oz
Sensitivity	90dB	90dB	90dB	89dB
Power Handling	90 Watts	90 Watts	90 Watts	40 Watts
Impedance	4 ohms	4 ohms	4 ohms	4 ohms
Frequency Response	45Hz - 25kHz	45Hz - 22kHz	45Hz - 20kHz	96Hz - 20kHz

Large Oval Speakers



KFC-6909
6" x 9" 3-Way Speaker

Large Oval Speaker Features

	KFC-7178	KFC-6909	KFC-6908	KFC-6907	KFC-6906S	KFC-6905S	KFC-6904S
Speaker Features							
Woofer	7" x 10" Pearl Mica Polypropylene Cone	6" x 9" Pearl Mica Polypropylene Cone	6" x 9" Pearl Mica Polypropylene Cone	6" x 9" Pearl Mica Polypropylene Cone	6" x 9" Pearl Mica Polypropylene Cone	6" x 9" Pearl Mica Polypropylene Cone	6" x 9" Pearl Mica Polypropylene Cone
Midrange	2 3/4" Water Resistant Cone	2 3/4" PEI Film Cone	2 3/4" PEI Film Cone	2 3/4" Water-Resistant Cone	2 3/4" Water-Resistant Cone		
Tweeter	3/4" PPS Dome (2)	1" PEI Film Balanced Dome	1" PPS Film Balanced Dome	1 3/16" Ceramic Dome (2)		2 3/4" Water-Resistant Cone	PEI Film Wizzer Cone
Super-Tweeter		1 3/16" PPS Film Dome	1 3/16" PPS Film Dome		1 3/16" PPTA Film Balanced Dome		
Woofer Surround	Urethane	Rubber	Urethane	Cloth	Cloth	Cloth	Cloth
Gold-Plated Speaker Connectors	•	With Glass Epoxy Circuit Board	With Glass Epoxy Circuit Board	With Glass Epoxy Circuit Board	With Glass Epoxy Circuit Board	With Glass Epoxy Circuit Board	With Glass Epoxy Circuit Board
Magnet Weight	15.6 oz	15.6 oz	12 oz	10 oz	10 oz	9.7 oz	8.1 oz
Sensitivity	93dB	93dB	93dB	93dB	92dB	92dB	92dB
Power Handling	320 Watts	250 Watts	220 Watts	170 Watts	170 Watts	170 Watts	140 Watts
Impedance	4 ohms	4 ohms	4 ohms	4 ohms	4 ohms	4 ohms	4 ohms
Frequency Response	22Hz - 33kHz	28Hz - 30kHz	28Hz - 30kHz	28Hz - 28kHz	28Hz - 28kHz	28Hz - 26kHz	28Hz - 25kHz

Small Oval Speakers



KFC-6808C
6" x 8" 3-Way Speaker

Small Oval Speaker Features

	KFC-6808C	KFC-5708C	KFC-4675/4675C	KFC-4645C	KFC-4625C	KFC-415C
Speaker Features						
Woofer	6" x 8" Pearl Mica Polypropylene Cone	5" x 7" Pearl Mica Polypropylene Cone	4" x 6" Injection-Molded Polypropylene Cone	4" x 6" Water-Resistant Cone	4" x 6" Injection-Molded Polypropylene Cone	4" x 10" Injection-Molded Polypropylene Cone
Midrange	1 3/16" PEI Film Balanced Dome					
Tweeter	1/2" Dome	1 3/16" PEI Film Balanced Dome	1" Polyamide Balanced Dome	Wizzer Cone	1" Polyamide Balanced Dome	2 3/8" Polyamide Balanced Dome
Woofer Surround	Urethane	Urethane	Urethane	Cloth	Urethane	Urethane
Magnet Weight	10.1 oz	6.5 oz	2.9 oz	3.1 oz	2.9 oz	8.2 oz
Sensitivity	92dB	91dB	90dB	90dB	90dB	91dB
Power Handling	200 Watts	140 Watts	60 Watts	60 Watts	60 Watts	160 Watts
Impedance	4 ohms	4 ohms	4 ohms	4 ohms	4 ohms	4 ohms
Frequency Response	30Hz - 30kHz	35Hz - 30kHz	50Hz - 25kHz	50Hz - 25kHz	50Hz - 25kHz	40Hz - 25kHz

Tweeters



KFC-T204
3/4" Balanced Dome Tweeter

Tweeter Features

	KFC-T204	KFC-ST30
Speaker Features		
Type	Balanced Dome Tweeter	Balanced Dome Add-On Tweeter
Tweeter	3/4" PEI Film Balanced Dome	1 3/16" PEI Film Balanced Dome
Mounting	5-Way Swivel	Surface Mount (20° Angle)
2-Way Component Crossover	•	
K-Glow Tweeter Protection Circuit	•	
In-Line High-Pass Filter		•
Sensitivity	91dB	90dB
Power Handling	150 Watts	120 Watts
Impedance	4 ohms	4 ohms
Frequency Response	3.5Hz - 32kHz	5kHz - 25kHz

Enclosed Speakers



KSC-9903
3-Way Truck Speaker

Enclosed Speaker Features

	KSC-9903	KSC-8803	KSC-7702
Speaker Features			
Type	3-Way Truck Speaker	2-Way Truck Speaker	3-Way Stereo Hatchback Speaker
Woofer	10" Cone	10" Cone	2 x 10" Cones
Midrange	3 1/2" Cone		2 x 3 1/2" Cones
Tweeter	2" Cone	2" Cone	2 x 2" Cones
Slant-Mount Midrange & Tweeter	•	Tweeter	All Drivers
Rugged Metal Grilles	•	•	•
Enclosure Type	Ported	Ported	Ported
Sensitivity	90dB	90dB	90dB
Power Handling	300 Watts	200 Watts	300 Watts x 2
Impedance	4 ohms	4 ohms	4 ohms
Frequency Response	40Hz - 20kHz	50Hz - 20kHz	30Hz - 20kHz

Superior power handling in S, M, L, and XL

The Kenwood subwoofer line features a variety of sizes and shapes, big power handling, and tons of options for configuring your system.

Since size matters, let's start there. Our subs come in **12", 10", 8" and 6 1/2" sizes**, and our line also includes **enclosed and bandpass subs**.

And if you're looking for big audio, we've got you covered: power handling goes up to a whopping 700 watts.

Two of our component subwoofers, the KFC-W3025DVC and KFC-W2525DVC, feature **dual voice coils** (at 4 ohms each), which can be connected in series or in parallel. This gives you added flexibility in building your system—and some great options in reproducing **very clean, very powerful bass**.

All of our component subs are well-designed and solidly built. They feature an extremely strong yet lightweight **Pearl-Mica Injection-Molded Polypropylene Cone**, for accurate musical reproduction across its entire frequency range.

The unique **one-piece Tornado design**—besides its killer looks—makes the cone very stiff, for maximum rigidity and reduced distortion. The sub's cone is one piece, not two pieces glued together as in some subs, so it's more durable and resonates less. An **extended, vented pole piece** helps to maintain maximum magnetic energy while effectively dissipating heat. And a bumped yoke allows the voice coil a long, yet tightly controlled range of movement—ideal for producing more sound with lower distortion.

We also offer three powered enclosed models, including the KSC-WA62RC, which **takes up only 0.34 cubic feet of space** but offers a maximum output power of 100 watts (50 watts + 50 watts) and bass reproduction down to 35Hz. This combination gives you a lot of muscle in a tiny container. Its secret is a **WOOX™ Passive Radiator**—with a 6 1/2" gold-coated concave cone—that acts like a long port without requiring the space. Two of our powered enclosed subs come with remotes.

And, our two **boxed bandpass subs** (one's a dual bandpass model, one's a single) feature **Pearl Mica Injection-Molded Polypropylene Cone woofers** and **clear Plexiglas view windows**. And yes, they deliver a major bass kick that will keep you smiling long after the song's over.

So, no matter what configuration you're looking for, Kenwood's got a subwoofer that will fit in perfectly.



Subwoofers



KFC-W2525DVC
10" Tornado-Type Dual Voice
Coil Subwoofer

Subwoofer Features and
Specifications

	KFC- W3025DVC	KFC-W3005	KFC-W3085	KFC- W2525DVC	KFC-W2505	KFC-W2585	KFC-W2005	KFC-W1705
Subwoofer Features								
Silver Pearl Mica Polypropylene Tornado-Type Cone	12"	12"	12"	10"	10"	10"	8"	6½"
Urethane Surround	•	•	•	•	•	•	•	•
One-Piece Cone	•	•	•	•	•	•	•	•
Dual Vented Voice Coils	2-Layer			2-Layer				
Vented Voice Coil		2-Layer	2-Layer		2-Layer	2-Layer	2-Layer	4-Layer
Vented Extended Pole Piece	•	•	•	•	•	•	•	•
Bumped Yoke	•	•	•	•	•	•	•	•
Gold-Plated 2-Way SB-Type Speaker Connectors	•	•	•	•	•	•	•	•
Magnet Weight	42.3 oz	42.3 oz	42.3 oz	35.3 oz	35.3 oz	35.3 oz	24 oz	12 oz
Power Handling	700 Watts	700 Watts	700 Watts	600 Watts	600 Watts	600 Watts	500 Watts	500 Watts
Sensitivity	93dB	93dB	93dB	91dB	91dB	91dB	91dB	90dB
Impedance	2 x 4 ohms	4 ohms	8 ohms	2 x 4 ohms	4 ohms	8 ohms	8 ohms	8 ohms
Frequency Response	25Hz - 800Hz	25Hz - 800Hz	25Hz - 800Hz	28Hz - 800Hz	28Hz - 800Hz	28Hz - 800Hz	30Hz - 1kHz	30Hz - 3.5kHz
Mounting Depth	5⅞"	5⅞"	5⅞"	4½"	4½"	4½"	3⅝"	2⅞"
Thiele-Small Parameters								
DC Resistance (Re)	3.4 ohms + 3.4 ohms	3.34 ohms	7.2 ohms	3.2 ohms + 3.2 ohms	3.39 ohms	7.3 ohms	3.35 ohms	3.31 ohms
Resonant Frequency (Fs)	33Hz	32Hz	37Hz	36Hz	35Hz	44Hz	50Hz	64Hz
Mechanical Q Factor (Qms)	10.95	10.45	10.88	11.54	9.54	11.3	11.42	11.09
Electrical Q Factor (Qes)	0.64	0.70	0.64	0.64	0.91	1.43	1.14	1.03
Total Q Factor (Qts)	0.6	0.66	0.6	0.6	0.83	1.26	1.04	0.94
Volume Acoustic Compliance (VAS)	66.7 liters/ 2.353 cu. ft	82.84 liters/ 2.925 cu. ft	71.1 liters/ 2.508 cu. ft	36.5 liters/ 1.287 cu. ft	41.7 liters/ 1.473 cu. ft	32.8 liters/ 1.157 cu. ft	8.87 liters/ 0.313 cu. ft	5 liters/ 0.177 cu. ft
Moving Mass (Mms)	123.1g	100.1g	91.7g	91.4g	69.1g	68.4g	41.9g	26g
Voice Coil Diameter	2⅞"	2⅞"	2⅞"	1⅞"	1⅞"	1⅞"	1⅞"	1⅜"
Force Factor Bl	16.5 Tm	9.8 Tm	11.8 Tm	14.52 Tm	7.57 Tm	9.88 Tm	8.07 Tm	5.6 Tm
Peak Excursion (Xmax)	9mm	9mm	9mm	12mm	12mm	12mm	6.5mm	2.5mm

Enclosed Subwoofers



KSC-WA62RC
Powered WOOX Subwoofer

Enclosed Subwoofer
Features

	KSC-WA100	KSC-WA82RC	KSC-WA62RC	KSC-BP210	KSC-BP110
Subwoofer Features					
Type	Powered Subwoofer	Powered Subwoofer	Powered Subwoofer	Dual Bandpass Subwoofer	Bandpass Subwoofer
Woofers	10" Pearl Mica Injection-Molded Polypropylene Cone	8" Pearl Mica Injection-Molded Polypropylene Cone	5¼" Gold-Coated Cone	2 x10" Red Pearl Mica Injection-Molded Polypropylene Cone	10" Red Pearl Mica Injection-Molded Polypropylene Cone
WooX Passive Radiator			•		
Maximum Output Power	100 Watts (50 Watts + 50 Watts)	100 Watts (50 Watts + 50 Watts)	100 Watts (50 Watts + 50 Watts)		
Rated Output Power	60 Watts (30 Watts + 30 Watts)	60 Watts (30 Watts + 30 Watts)	60 Watts (30 Watts + 30 Watts)		
Dual Voice Coils	•	•	•		
Enclosure Type	Ported	Ported	Passive Radiator	Dual Bandpass	Bandpass
Low-Pass Electronic Crossover	50 - 200Hz Variable	60/80/120/160Hz Selectable	60/80/120/160Hz Selectable		
RCA Inputs	Gold-Plated	Gold-Plated	•		
Parallel RCA Outputs	Gold-Plated	Gold-Plated			
Variable Input Sensitivity	•	•	•	•	•
Phase Switch (0°/-180°)	•	•	•	•	•
Speaker Level Inputs	•	•	•		
Sensitivity				108dB (in-vehicle)	106dB (in-vehicle)
Power Handling				300 Watts x 2	300 Watts
Impedance				4 ohms (each woofer)	4 ohms
Frequency Response	18Hz - 1kHz	20Hz - 1kHz	35Hz - 160Hz	26Hz - 150Hz	28Hz - 170Hz
Included Accessories					
Wired Remote		•	•		
Mounting Belts	•	•			

Accessories



KPA-H100
Heads Up Display



KCA-R800AV
A/V Learning Remote Control



KCA-S210A
2 Changer plus AUX Input Switcher

Accessories

Optional Necessities	
KPA-HD100	Heads-Up Display
KPA-SS100	Sensor Unit
KPA-CP100	Compass
KTC-WB100	Weather Band Tuner
Adapters and Cables	
KCA-S210A	2 Changer plus Aux Input Switcher
CA-C1AUX	Aux Input Adapter
CA-DS100	DIN-to-Square Adapter
CA-SD200	Square-to-DIN Adapter
CA-C2EX	6.5-Foot CD Changer Extension Cable
CA-C2SH	6.5-Foot Changer Cable
Remote Controls	
KCA-R800AV	A/V Learning Remote Control
KCA-RC700	Steering Wheel Remote Control
KCA-RC600	Grip-Type 10-Key Remote Control
KCA-R6A	Card-Style 10-Key Remote Control
Changer Controller	
KCA-R42FM	Add-On Changer Controller (works with all Kenwood changers except the C907 and C929)
Changer Magazines	
KCA-M110	Black 10-Disc Magazine for KDC-C803/C604/C504/C603/C800/C601/C601FM/C600
KCA-M112	10-Disc Magazine for KDC-C715/C515FM/C712/C711/C511/C510FM/C810/C710/CX85/CX82/CPS81/C907
KCA-M120	Blue 10-Disc Magazine specifically for KDC-C602 and KDC-C602FM
KCA-M612	6-Disc Magazine for KDC-6-Disc Magazine for KDC-C665/C662/C661/C660/C560/C56FM/C465FM/C461
KCA-MD60	6 Mini Disc Magazine for KMD-C80
Replacement Faceplates	
TDF-29D	KDC-MP919
TDF-28D	KDC-MP819/719
TDF-27DV	KDC-MPV7019/MPV619
TDF-25DB	KDC-5019
TDF-25D	KDC-519
TDF-24D	KDC-419
TDF-23DS	KDC-4019
TDF-23D	KDC-319
TDF-29MR	KDC-29MR
TDF-22DV	KDC-2019V
TDF-22DS	KDC-217S
TDF-22D	KDC-2019/219
TDF-21D	KDC-217
TDF-D301G	KDC-C301
TDF-14MD	KMD-44
TDF-25R	KRC-535
TDF-24R	KRC-435
TDF-23R	KRC-335
TDF-22R	KRC-235, 225







Internet

www.kenwoodusa.com

e-mail

inquiry@kenwoodusa.com

1-800-KENWOOD

Main Office

P.O. Box 22745
Long Beach, CA 90801-5745

Canada Office

6070 Kestrel Road
Mississauga, Ontario L5T 1S8

Hawaii Office

Kenwood USA Corporation
P.O. Box 903
Pearl City, HI 96782

Puerto Rico Office

Kenwood USA Corporation
RH Todd y Esq Baldorioty de Castro Ave.
P.O. Box 16460
San Juan, PR 00908-6460

©2002 KENWOOD USA Corporation. All Rights Reserved.